

Open

# Rampage

## Open Workflow System



### Imposition

Fuji Rampage works with the majority of readily available imposition packages giving you the freedom to choose the one best suited to your work. Impositions can be carried out using the RDM data either in raster or PDF format, utilising low resolution proxy files (page FPO's) or JDF. As Fuji Rampage is a single page workflow, individual pages can be corrected and replaced without going back to the imposition programme. This also allows you to start imposing without the necessity of having all the pages.

### Rampage Pathway JDF Interface

Fuji Rampage embraces the JDF standard in a number of practical ways. The Rampage Pathway JDF Interface included within the workflow provides a number of Java based modules that provide JDF communications and data transfers across organisational functions and systems. These include links to MIS systems, billing systems, production planning software as well as imposition and step and repeat software.

A modular and scaleable workflow that can grow with your business

*'The versatility of Fuji Rampage has allowed us to invest in different parts of our system at a time that suits our business.'*

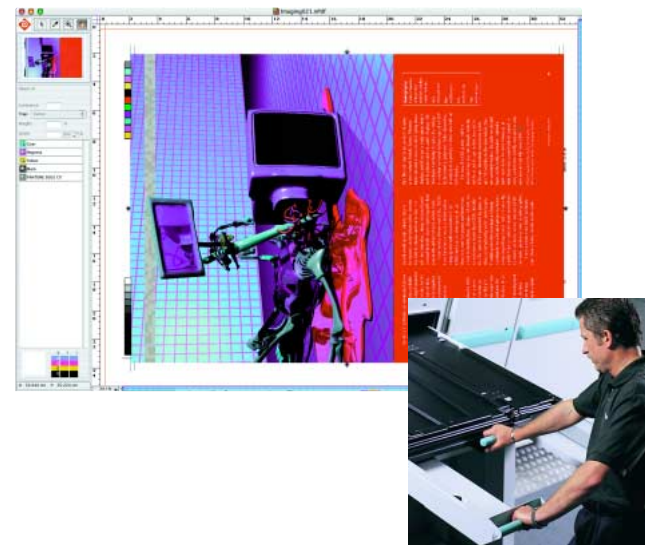
**Workflow is a critical part of the print process chain and choosing the correct system is a daunting decision. However, Fuji Rampage has been designed to make this decision simple as it is based around a number of key principles:**

### Fuji Rampage supports the following Fuji output devices:

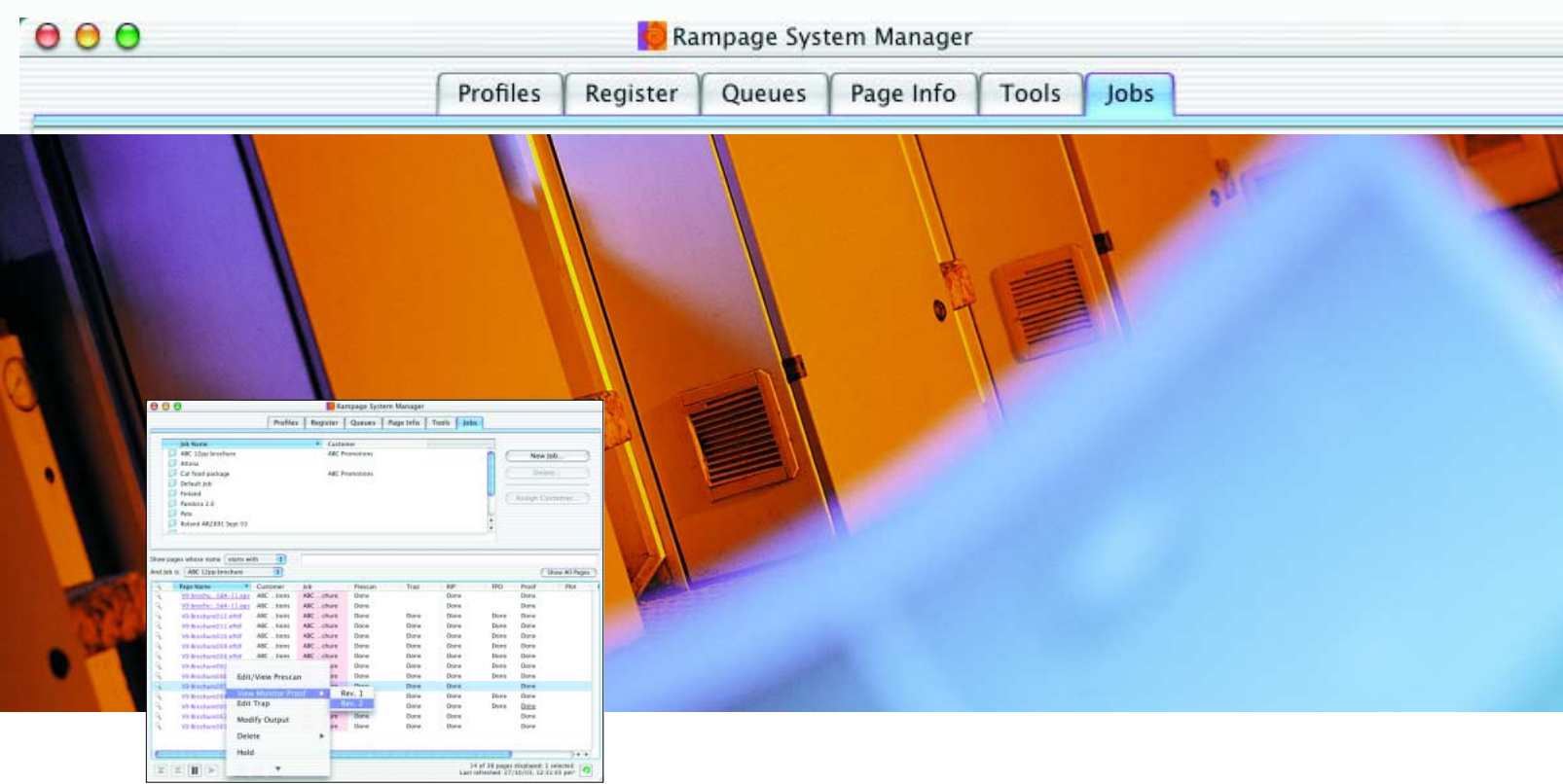
Luxel F-6000	Luxel T-9000 CTP (all versions)
Luxel F-9000	Luxel Vx-6000 CTP (all versions)
Luxel P-9600 CTP	Luxel V-9600 CTP (all versions)
Luxel T-6000 CTP (all versions)	Luxel Vx-9600 CTP (all versions)

### and devices from the following suppliers

Agfa	Gretag/CSI	Optronics
Basys	Heidelberg	Omni-Adast
Creo	Kodak	Polaroid
ECRM	Komori	Presstek
Escher Grad	Krause	Purup-Eskofot
Gerber/Barco	Luscher	Screen



- Gives you the freedom to choose from a wide range of output devices from a variety of vendors
- Modular, scalable system with cost effective upgrade paths that will grow with your business
- Easy-to-use with a simple user interface to minimise training
- Stable solution with a world-wide installed base with no risk of obsolescence
- Flexible system which accepts jobs in a variety of formats
- Based around open industry standards – JDF, ICC, PDF
- Adds value by allowing you to manage your customers' files with ease and efficiency



### An open system

Fuji Rampage is designed to support more than 150 different output devices from a wide range of manufacturers. So you not only capitalise on your existing investment, you also get reassurance that you're not tying yourself to one vendor in the future. And with the ability to proof to virtually any commercially available proofer, the most efficient workflow system is also one of the most flexible too.

Fuji Rampage accepts a wide variety of input file formats for maximum flexibility. These include PDF, PDF X, TIFF, EPS, PS Comp, PS Sep, DCS 1&2 and CT/LW. The system can also export data in the following file formats: DCS, TIFF/IT-P1, PDF Raster, PDF Vector and 1-bit TIFF.

Fuji Rampage can interface with MIS, production planning, imposition applications, press and post-press equipment via an open JDF interface called Rampage Pathway.

### Modular and scalable system to grow with your business

The Fuji Rampage workflow is comprised of modular components that can be configured into a single PC system, or distributed across multiple PCs. As your requirements change, you can scale the system with

manageable, incremental investments. For example, you can take advantage of improvements in PC performance simply and cost-effectively.

### Data Integrity and Rampage Digital Master (RDM)

With a full digital workflow the concern over data integrity has never been greater. You need to be absolutely sure that your proof is based on exactly the same data as that sent to your output device. Mistakes are costly, especially if they reach the press or worse still a client. Fuji Rampage uses a Reliable Digital Master (RDM) from which all proofs and the final film or plate are made giving you absolute reassurance about data integrity.

### Proofing

Fuji Rampage includes a proofing module called Rampage Direct which provides a wide variety of proofing options. All are based on the Reliable Digital Master and RIP-Once technology, and can output to the majority of commercially available proofers.

Soft proofing is ideal for small format printers allowing full resolution proofing and remote proofing using low-res PDFs.

Halftone proofing is available where screened data is sent directly to halftone proofing systems from a variety of manufacturers, and proofing devices with 3rd party RIPs can be driven via a contone file output.

For Remote proofing, collaboration and approval can be achieved remotely via the Internet with the Rampage Remote option.

The highest quality proofing systems are also catered for, providing full colour managed, contract quality proofing systems based on ICC profiled equipment. Fujifilm or third party inkjet proofers and quality controlled Fujifilm ink jet proofing paper can form a part of the solution.

### Trapping

Fuji Rampage has best-in-class automatic in-RIP trapping to minimise labour intensive trapping tasks. Fuji Rampage Trapping can automatically:

- Choke one part of an object and spread another (mixed trap).
- Pull back support colours in process blacks (e.g. 25C, 25M, 25Y, 100K).

- Trap image-to-image, including spot and process monotones, duo-tones, tri-tones, and quad-rones.
- Handle as many as 28 spot and 4 process inks.
- Adjust colour values within a trap as needed for gradients and images.

### Offline trapping editor

When dealing with metallics, bump colours and other concerns, you can preview and adjust traps using the Mac-based Trap Editor, which you load on as many Macs as you want. To optimise productivity, the Trap Editor runs offline. This allows other files in the queue to continue to RIP while you check traps.

Because it's object based, the Trap Editor is much easier to learn and use as compared to zone-based or colour-pair trapping. By the same token, you have all the tools and flexibility you need to deal with complex situations. Once you've selected an object (even a single text character) you can adjust trap width, direction, weight, and other variables.

### Screening

Fuji Rampage provides a range of screening technologies as standard. These include conventional (AM), Hybrid (FM/AM), FM 1 and FM2 – the latest Stochastic (FM) 2nd order technology.

